



ISO 9001:2008 Certified

PIONEER ENTERPRISE

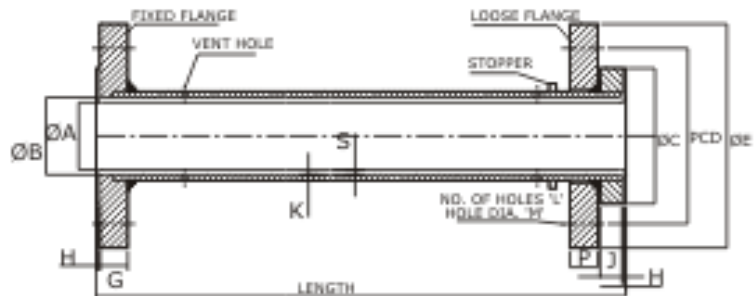
101, Raudat Tahera Street, Mumbai - 400 003, India.

Tel : (91-22) 2347 2534 Telefax : (91-22) 2347 0325

E-mail: pioneer@vsnl.com, pioneerfitting@yahoo.com

Website: www.instrumentation-fittings.com

Lined Pipe



SPECIFICATIONS:

1. ALL DIMENSIONS ARE IN MM
2. PIPE
 - i. ANSI B 36.1D, ASTM A 10B GR B SCH 40 Upto 150 nb, 200 nb to 600 nb mn sch 20* & 700 nb onwards std sch*
 - ii. 450 & Above Sch pipe as above or welded construction from IS 2062 Plates with Spot X-Ray

FLANGE : ANSI B. 16.5 ASA 150# IS 2022 GR A.

LINER :ASTM D 1457 TYPE -II PTFE / 700 NE ONWARDS PTFE WELDED LINER

STANDARD MAX. LENGTH OF PIPE

3000 MM

THE TOLERANCES OF LENGTH OF PIPE

+/- 3.2

LINING AND OTHER DIMENSIONAL TOLERANCES

AS PER ASTM A 1545 9B / ASTM D 1457 TYPE III

OTHER SPECIFICATIONS / DIMENSIONS / VACCUM / SERVICE AVAILABLE ON REQUEST

P* G-2MM: J* 0.88

Size (NB)	øA±1	øB	øC	PCD	øE	G	No. of Holes	Holes Dia	Pipe THK. K	Liner THK. S	Face THK. H
15 MM	14	21	34.9	60.3	88.9	11	4	15.9	2.9	4	2.4
20 MM	19.6	26.6	42.7	69.8	98.4	13	4	15.9	3.4	4	2.4
25 MM	19.6	26.6	50.8	79.4	108	14	4	15.9	3.4	4	2.4
32 MM	28.1	35.1	63.5	88.9	117.5	16	4	15.9	3.6	4	2.4
40 MM	33.9	40.9	73	98.4	127	18	4	15.9	3.7	4	2.4
50 MM	45.5	52.5	92.1	121	152.4	19	4	19	3.9	4	2.4
65 MM	55.7	62.7	105	140	177.8	22	4	19	5.2	4	2.4
80 MM	70.9	77.9	127	152	190.5	24	4	19	5.5	4	2.4
100 MM	95.3	102	157	191	228.6	24	8	19	6	4	2.4
125 MM	119	128	186	216	254	24	8	22.2	6.6	5	3.8
150 MM	145	154	216	241	279.4	25	8	22.2	7.1	5	3.8
200 MM*	197	206	270	299	342.9	29	8	22.2	6.35	5	3.8
250 MM*	249	260	324	362	406.4	30	12	25.4	6.35	6	4
300 MM*	300	311	381	432	482.6	32	12	25.4	6.35	6	4
350 MM*	329	340	413	476	533.4	35	12	28.6	7.92	6	4
400 MM*	380	391	470	540	596.9	37	16	28.6	7.92	6	4
450 MM*	429	441	533	578	635	40	16	31.8	7.92	6.5	4.4
500 MM*	476	489	584	635	698.5	43	20	32	9.52	7	4.8
600 MM*	576	591	692	749	812.6	48	20	35	9.52	8	5.6
700 MM	685	692	802	864	827.1	50	28	35	9.52	4	2.4
800 MM	787	794	916	978	1060	50	28	41.3	9.52	4	2.4



ISO 9001:2008 Certified

PIONEER ENTERPRISE

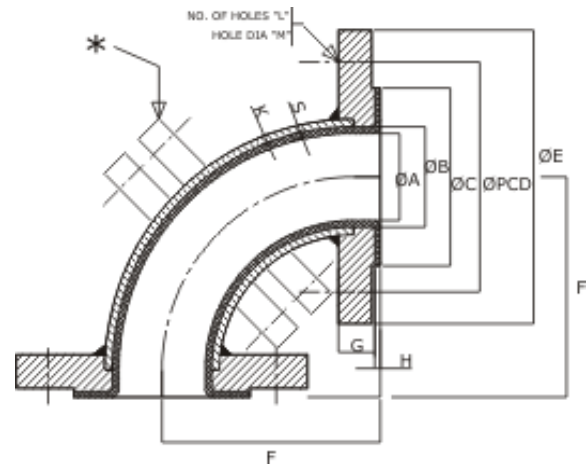
101, Raudat Tahera Street, Mumbai - 400 003, India.

Tel : (91-22) 2347 2534 Telefax : (91-22) 2347 0325

E-mail: pionlace@vsnl.com, pioneerfitting@yahoo.com

Website: www.instrumentation-fittings.com

Lined Elbow 90°



SPECIFICATIONS:

1. ALL DIMENSIONS ARE IN MM
2. MATERIAL OF CONSTRUCTION
 - ELBOW BODY : ASTM A 235 GR WPB
 - FLANGE : ANSI B. 16.5 ASA 150# IS 2002
 - LINER : ASTM D 1457 TYPE III, PTFE
 - * : In Two Piece Construction
 - ** : In Three Piece Construction

Size (NB)	øA±1	øB	øC	F1	F	PCD	øE	G	No. of Holes	Holes Dia	Pipe THK. K	Liner THK. S	Face THK. H
15 MM	14	21	34.9	44	89	60.3	88.9	11	4	15.9	2.9	4	2.4
20 MM	19.6	26.6	42.7	44	89	69.8	98.4	13	4	15.9	3.4	4	2.4
25 MM	19.6	26.6	50.8	44	89	79.4	108	14	4	15.9	3.4	4	2.4
32 MM	28.1	35.1	63.5	51	95	88.9	118	16	4	15.9	3.6	4	2.4
40 MM	33.9	40.9	73	57	102	98.4	127	18	4	15.9	3.7	4	2.4
50 MM	45.5	52.5	92.1	63	114	121	152	19	4	19	3.9	4	2.4
65 MM	55.7	62.7	105	76	127	140	178	22	4	19	5.2	4	2.4
80 MM	70.9	77.9	127	76	140	152	191	24	4	19	5.5	4	2.4
100 MM	95.3	102	157	102	165	191	229	24	8	19	6	4	2.4
125 MM	119	128	186	114	190	216	254	24	8	22.2	6.6	5	3.8
150 MM	145	154	216	127	203(205)*	241	279	25	8	22.2	7.1	5	3.8
200 MM*	197	206	270	140	229(338)*	299	343	29	8	22.2	6.35	5	3.8
250 MM*	249	260	324	165	(419)*	362	406	30	12	25.4	6.35	6	4
300 MM*	300	311	381	190	(483)*	432	483	32	12	25.4	6.35	6	4
350 MM*	329	340	413	226	(546)*	476	533	35	12	28.6	7.92	6	4
400 MM*	380	391	470	253	(610)*	540	597	37	16	28.6	7.92	6	4
450 MM*	429	441	533	279	(673)**	578	635	40	16	31.8	7.92	6.5	4.4
500 MM*	476	489	584	305*	(737)**	635	699	43	20	32	9.52	7	4.8
600 MM*	576	591	692	358*	(864)***	749	813	48	20	35	9.52	8	5.6



ISO 9001:2008 Certified

PIONEER ENTERPRISE

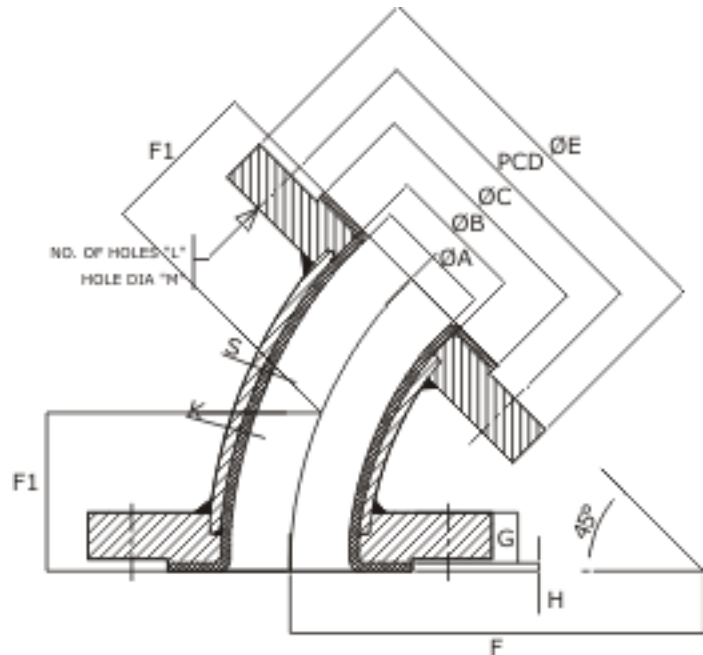
101, Raudat Tahera Street, Mumbai - 400 003, India.

Tel : (91-22) 2347 2534 Telefax : (91-22) 2347 0325

E-mail: pionlace@vsnl.com, pioneerfitting@yahoo.com

Website: www.instrumentation-fittings.com

Lined Elbow 45°



SPECIFICATIONS:

1. ALL DIMENSIONS ARE IN MM
2. MATERIAL OF CONSTRUCTION
 - ELBOW BODY : ASTM A 234 GR WPB
 - FLANGE : ANSI B. 16.5 ASA 150# IS 2002
 - LINER : ASTM D 1457 TYPE III, PTFE
 - * : In Two Piece Construction
 - ** : In Three Piece Construction

Size (NB)	øA±1	øB	øC	F1	F	PCD	øE	G	No. of Holes	Holes Dia	Pipe THK. K	Liner THK. S	Face THK. H
15 MM	14	21	34.9	44	89	60.3	88.9	11	4	15.9	2.9	4	2.4
20 MM	19.6	26.6	42.7	44	89	69.8	98.4	13	4	15.9	3.4	4	2.4
25 MM	19.6	26.6	50.8	44	89	79.4	108	14	4	15.9	3.4	4	2.4
32 MM	28.1	35.1	63.5	51	95	88.9	118	16	4	15.9	3.6	4	2.4
40 MM	33.9	40.9	73	57	102	98.4	127	18	4	15.9	3.7	4	2.4
50 MM	45.5	52.5	92.1	63	114	121	152	19	4	19	3.9	4	2.4
65 MM	55.7	62.7	105	76	127	140	178	22	4	19	5.2	4	2.4
80 MM	70.9	77.9	127	76	140	152	191	24	4	19	5.5	4	2.4
100 MM	95.3	102	157	102	165	191	229	24	8	19	6	4	2.4
125 MM	119	128	186	114	190	216	254	24	8	22.2	6.6	5	3.8
150 MM	145	154	216	127	203(205)*	241	279	25	8	22.2	7.1	5	3.8
200 MM*	197	206	270	140	229(338)*	299	343	29	8	22.2	6.35	5	3.8
250 MM*	249	260	324	165	(419)*	362	406	30	12	25.4	6.35	6	4
300 MM*	300	311	381	190	(483)*	432	483	32	12	25.4	6.35	6	4
350 MM*	329	340	413	226	(546)*	476	533	35	12	28.6	7.92	6	4
400 MM*	380	391	470	253	(610)*	540	597	37	16	28.6	7.92	6	4
450 MM*	429	441	533	279	(673)**	578	635	40	16	31.8	7.92	6.5	4.4
500 MM*	476	489	584	305*	(737)**	635	699	43	20	32	9.52	7	4.8
600 MM*	576	591	692	358*	(864)***	749	813	48	20	35	9.52	8	5.6



ISO 9001:2008 Certified

PIONEER ENTERPRISE

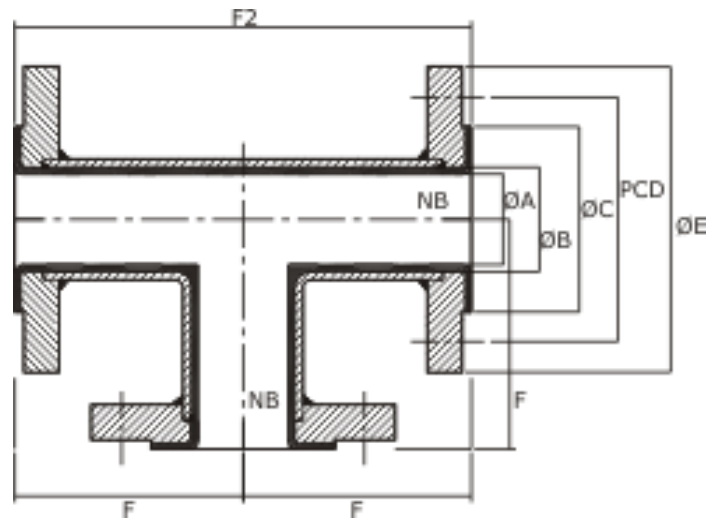
101, Raudat Tahera Street, Mumbai - 400 003, India.

Tel : (91-22) 2347 2534 Telefax : (91-22) 2347 0325

E-mail: pionlace@vsnl.com, pioneerfitting@yahoo.com

Website: www.instrumentation-fittings.com

Lined Equal Tee



SPECIFICATIONS:

1. ALL DIMENSIONS ARE IN MM
2. FOR OTHER DIMENSIONS PLEASE SEE 'LINED PIPE' PAGE
3. MATERIAL OF CONSTRUCTION
 - EQUAL TEE: EQUAL CROSS BODY (PIPE)
ANSI 6 3G. 10 ASTM A210 Gr. WCB / ASTM A 100 G B
 - FLANGE : ANSI B. 16.5 ASA 150# IS 2002
 - LINER :
ASTM D 3418
ASTM D 2116

NB	F	F2
20 MM	89	178
25 MM	89	178
32 MM	95	190
40 MM	102	204
50 MM	114	228
65 MM	127	254
80 MM	140	280
100 MM	165	330
125 MM	190	380
150 MM	203	406
200 MM	229	458
250 MM	279	558
300 MM	305	610
350 MM	356	712
400 MM	378	756
500 MM	457	914
600 MM	559	1118



ISO 9001:2008 Certified

PIONEER ENTERPRISE

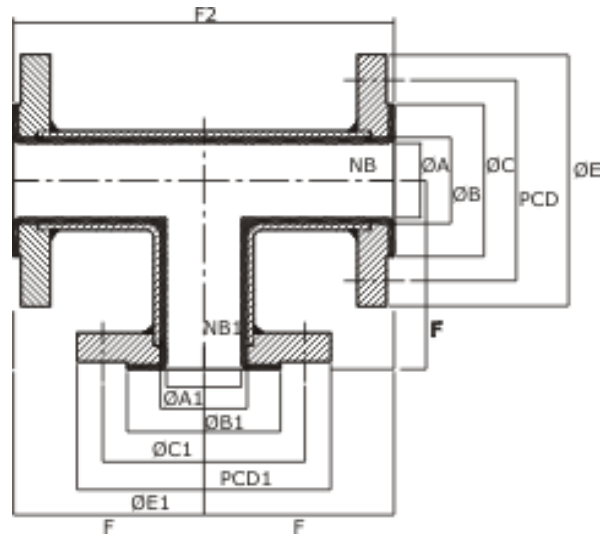
101, Raudat Tahera Street, Mumbai - 400 003, India.

Tel : (91-22) 2347 2534 Telefax : (91-22) 2347 0325

E-mail: pioneer@vsnl.com, pioneerfitting@yahoo.com

Website: www.instrumentation-fittings.com

Lined Reducing Tee



SPECIFICATIONS:

1. ALL DIMENSIONS ARE IN MM
2. FOR OTHER DIMENSIONS PLEASE SEE 'LINED PIPE' PAGE
3. MATERIAL OF CONSTRUCTION
 - EQUAL TEE: EQUAL CROSS BODY (PIPE)
ANSI B 46.10 ASTM A 216 Gr. WCB / ASTM A 106 Gr. B
 - FLANGE : ANSI B. 16.5 ASA 150W IS 2002
 - LINER :
ASTM D 3418
ASTM D 2116

NB	NB1	F	F2
25	20	89	178
32	25/20	95	190
40	25	102	204
50	40/25	114	228
65	50/40	127	254
80	25/50	140	280
100	80	165	330
125	65/80/100	190	380
150	80/100/125	203	406
200	80/100/125/150	229	458
250	100/125/150/200	279	558
300	100/125/150/200/250	305	610
350	100/125/150/200/250	356	712
400	150/200/250/300/350	378	756
500	500	457	914
600	600	559	1118



ISO 9001:2008 Certified

PIONEER ENTERPRISE

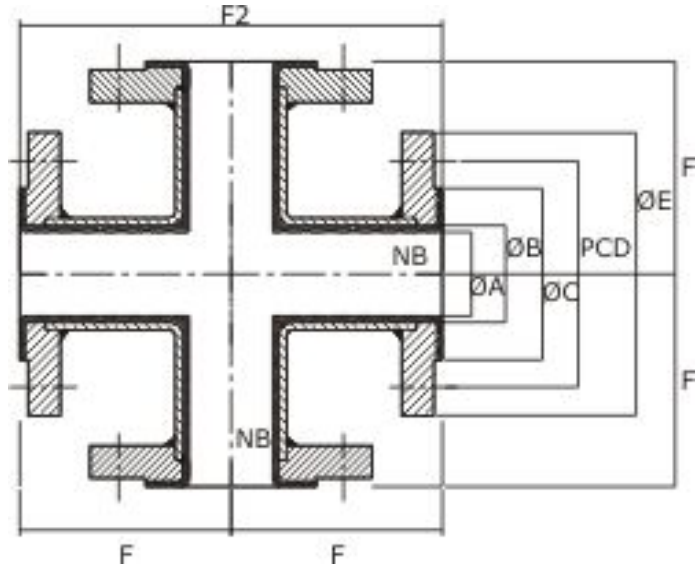
101, Raudat Tahera Street, Mumbai - 400 003, India.

Tel : (91-22) 2347 2534 Telefax : (91-22) 2347 0325

E-mail: pionlace@vsnl.com, pioneerfitting@yahoo.com

Website: www.instrumentation-fittings.com

Lined Equal Cross



SPECIFICATIONS:

1. ALL DIMENSIONS ARE IN MM
2. FOR OTHER DIMENSIONS PLEASE SEE 'LINED PIPE' PAGE
3. MATERIAL OF CONSTRUCTION
 - EQUAL TEE: EQUAL CROSS BODY (PIPE)
ANSI B 46.10 ASTM A 216 Gr. WCB / ASTM A 106 Gr. B
 - FLANGE : ANSI B. 16.5 ASA 150W IS 2002
 - LINER :
ASTM D 3418
ASTM D 2116

NB	F	F2
25	-	-
32	95	190
40	102	204
50	114	228
65	127	254
80	140	280
100	165	330
125	190	380
150	203	406
200	229	458



ISO 9001:2008 Certified

PIONEER ENTERPRISE

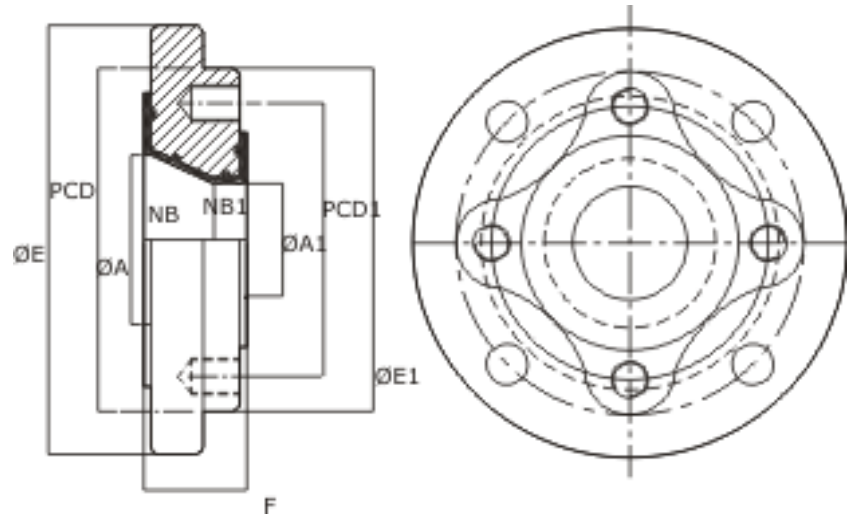
101, Raudat Tahera Street, Mumbai - 400 003, India.

Tel : (91-22) 2347 2534 Telefax : (91-22) 2347 0325

E-mail: pionlace@vsnl.com, pioneerfitting@yahoo.com

Website: www.instrumentation-fittings.com

Lined Reducing Flange



SPECIFICATIONS:

1. ALL DIMENSIONS ARE IN MM
2. FOR OTHER DIMENSIONS PLEASE SEE 'LINED PIPE' PAGE
3. MATERIAL OF CONSTRUCTION
 - EQUAL TEE: EQUAL CROSS BODY (PIPE)
ANSI B 46.10 ASTM A 216 Gr. WCB / ASTM A 106 Gr. B
 - FLANGE : ANSI B. 16.5 ASA 150W IS 2002
 - LINER :
ASTM D 3418
ASTM D 2116

NB	NB1	F
20	15	35
25	20	35
25	15	35
32	25	35
32	20	35
40	32	35
40	20	35
50	40	35
50	32	35
50	25	35
50	20	35
65	50	35
65	40	35
65	20	35
80	65	45
80	50	45
80	40	45
80	25	45
100	80	45
100	65	45
100	50	45
100	40	45
100	25	45
125	100	45
125	80	45
125	50	45
150	125	54
150	100	54
150	80	54
200	150	54
200	125	54
200	100	54
200	80	54
200	50	54
250	200	54
250	150	54
250	100	54
250	80	54
300	250	54
300	200	54
300	100	54
350	300	60
350	200	60
350	100	60



ISO 9001:2008 Certified

PIONEER ENTERPRISE

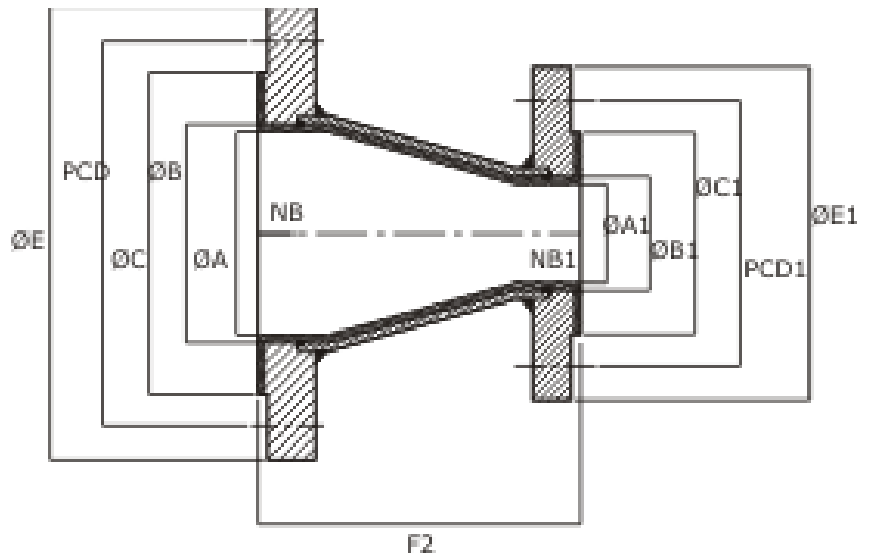
101, Raudat Tahera Street, Mumbai - 400 003, India.

Tel : (91-22) 2347 2534 Telefax : (91-22) 2347 0325

E-mail: pionlace@vsnl.com, pioneerfitting@yahoo.com

Website: www.instrumentation-fittings.com

Lined Reducer



SPECIFICATIONS:

1. ALL DIMENSIONS ARE IN MM
2. FOR OTHER DIMENSIONS PLEASE SEE 'LINED PIPE' PAGE
3. MATERIAL OF CONSTRUCTION
 - EQUAL TEE: EQUAL CROSS BODY (PIPE)
ANSI B 46.10 ASTM A 216 Gr. WCB / ASTM A 106 Gr. B
 - FLANGE : ANSI B. 16.5 ASA 150W IS 2002
 - LINER :
ASTM D 3418
ASTM D 2116

NB	NB1	F
25	20	114
32	25/20	114
40	15/25	114
50	40/25	127
65	50/40	127
80	50/40	152
100	80/50/25	178
125	100/80	203
150	125/100	229
200	150	279
250	200	305
300	250	356